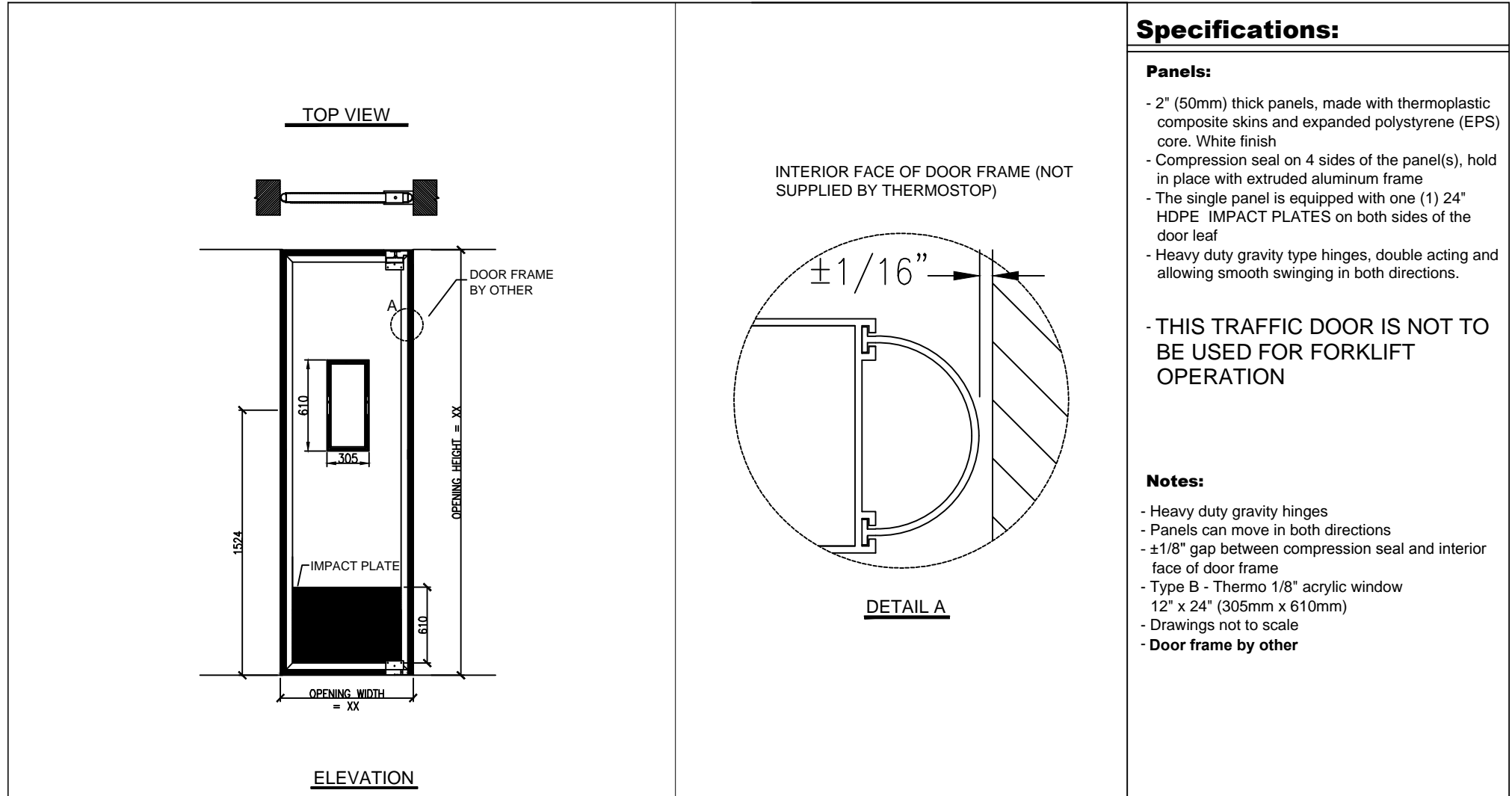


# SHOP DRAWING - SINGLE IMPACT TRAFFIC HD DOOR



## Specifications:

### Panels:

- 2" (50mm) thick panels, made with thermoplastic composite skins and expanded polystyrene (EPS) core. White finish
- Compression seal on 4 sides of the panel(s), hold in place with extruded aluminum frame
- The single panel is equipped with one (1) 24" HDPE IMPACT PLATES on both sides of the door leaf
- Heavy duty gravity type hinges, double acting and allowing smooth swinging in both directions.

**- THIS TRAFFIC DOOR IS NOT TO BE USED FOR FORKLIFT OPERATION**


### Notes:

- Heavy duty gravity hinges
- Panels can move in both directions
- ±1/8" gap between compression seal and interior face of door frame
- Type B - Thermo 1/8" acrylic window 12" x 24" (305mm x 610mm)
- Drawings not to scale
- **Door frame by other**

DIMENSIONS	QTY	CLEAR OPENING		APPROVED FOR MANUFACTURING BY:	
	X	WIDTH (OW)	HEIGHT (OH)	Name:	Date:
		XXmm	XXmm	Signature:	

## Legend

OW = OPENING WIDTH  
 OH = OPENING HEIGHT  
 SW = STRUCTURAL WIDTH  
 SH = STRUCTURAL HEIGHT


**THERMOSTOP INC.**
 3775, boulevard Losch, Longueuil (Québec), Canada J3Y 5T7,  
 Tel.: (450) 678-8666, Fax: (450) 678-7765, www.thermostop.com

Distributor: XXXXXXXX	Date: XX/XX/XXXX	Drawn by:	Verify by: L.H.	Page: 1/1	Note : *Drawings not to scale
Customer:	Revision:				