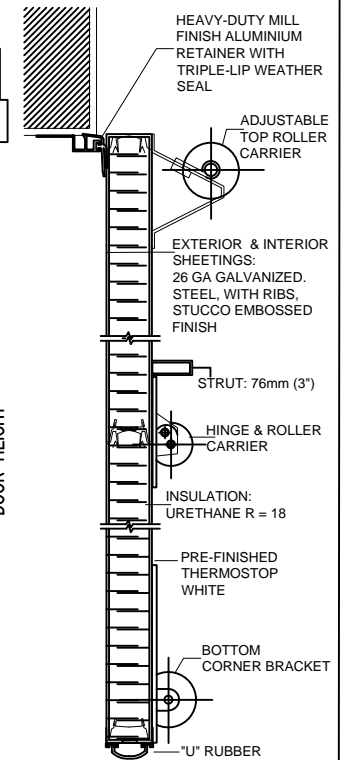
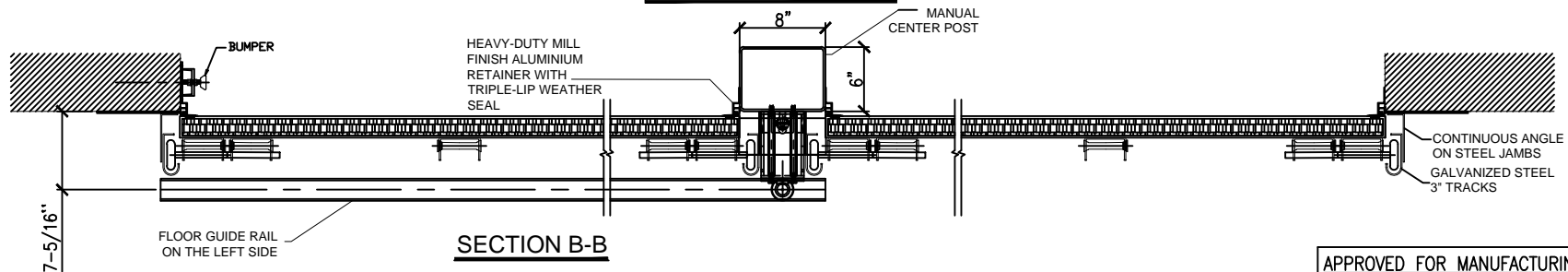


INTERIOR ELEVATION



SECTION A-A

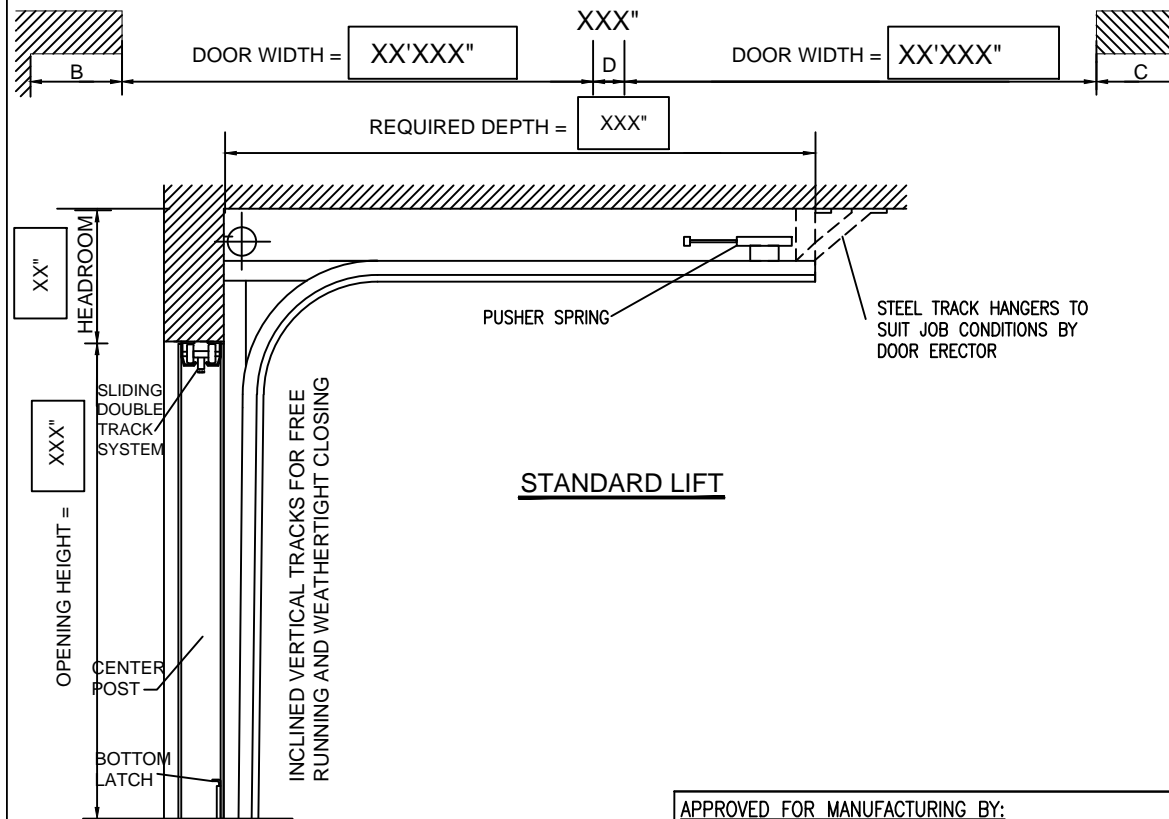
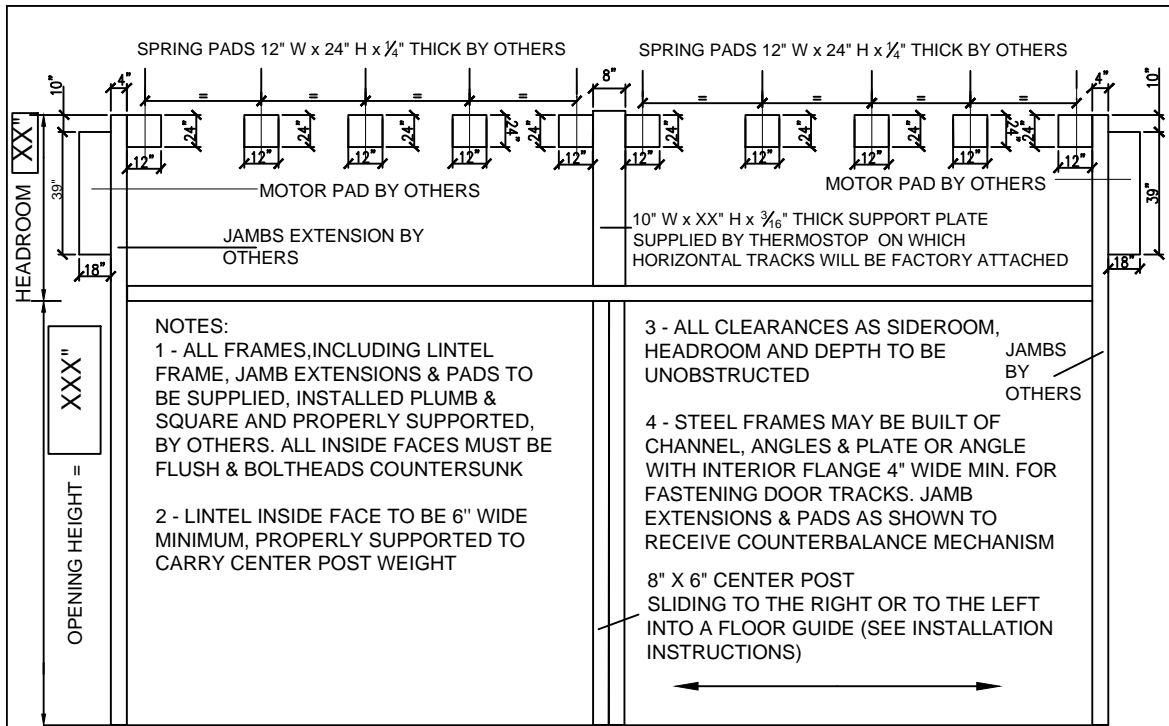


SECTION B-B

**THERMOSTOP
HANGAR DOOR
51mm (2") THICK**

MODEL	QTY.	DOOR		No. OF PAN.	No. OF SECT.	OPERATION
		WIDTH.	HEIGHT.			
Tradition Mark II-266	X	XX'XXX"	XX'X"	X	XX	ELECTRIC OPERATOR by XXXXXXXX
OPENING : XX'X" x XX'X"						
Notes: Drawing not to scale						

APPROVED FOR MANUFACTURING BY:					
Name:.....					
Signature:.....					
Date:.....					
THERMOSTOP INC.					
3775 BOULEVARD LOSCH, ST-HUBERT, QUÉBEC J3Y 5T7					
PROJECT NAME: XXXXXXXXXX					
DISTRIBUTOR : XXXXXXXXXX					
CONTRACTOR : XXXXXXXXXX					
ARCHITECT : XXXXXXXXXX					
DATE	DRAWN BY	VERIFIED BY	CONTRACT No.	DRAWING No.	REVISION
XX/XX/XXXX	X.X.	L.H.	XXXXXXX	X/X	



MODEL	QTY.	OPENING	CLEARANCE REQ'D				REQ'D DEPTH	GLAZED SECT.	GLASS
			A	B	C	D			
Tradition Mark II-266	X		XX"	22"	22"	8"	XXX"		

APPROVED FOR MANUFACTURING BY:

Name:.....

Signature:.....

Date:.....

THERMOSTOP INC.

3775 BOULEVARD LOSCH, ST-HUBERT, QUÉBEC J3Y 5T7

PROJECT NAME: XXXXXXXXXX

DISTRIBUTOR : XXXXXXXXXX

CONTRACTOR : XXXXXXXXXX

ARCHITECT : XXXXXXXXXX

DATE	DRAWN BY	VERIFIED BY	CONTRACT No.	DRAWING No.	REVISION
XX/XX/XXXX	X.X.	L.H.	XXXXXXXX	X/X	XX