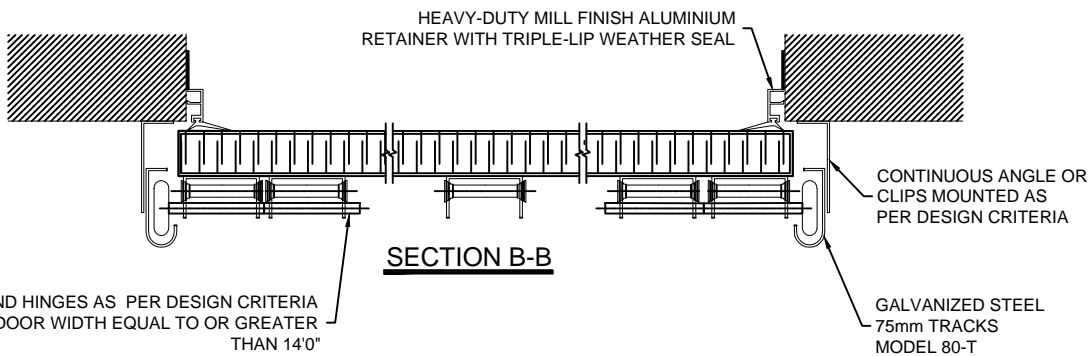


INTERIOR ELEVATION

SECTION A-A

**THERMOSTOP MODEL
TRADITION MARK II-244A**
DOOR THICKNESS = 50mm (2")



SECTION B-B

DOUBLE END HINGES AS PER DESIGN CRITERIA
OR FOR DOOR WIDTH EQUAL TO OR GREATER
THAN 14'0"

GALVANIZED STEEL
75mm TRACKS
MODEL 80-T

APPROVED FOR MANUFACTURING BY:

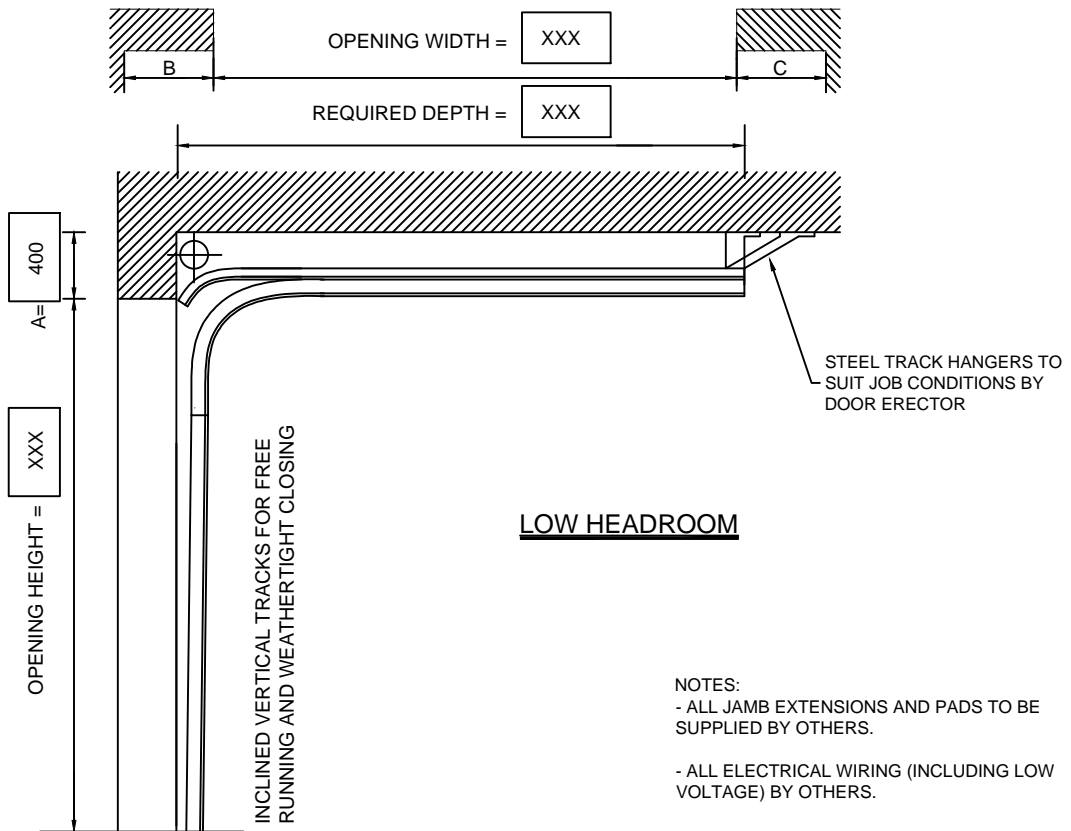
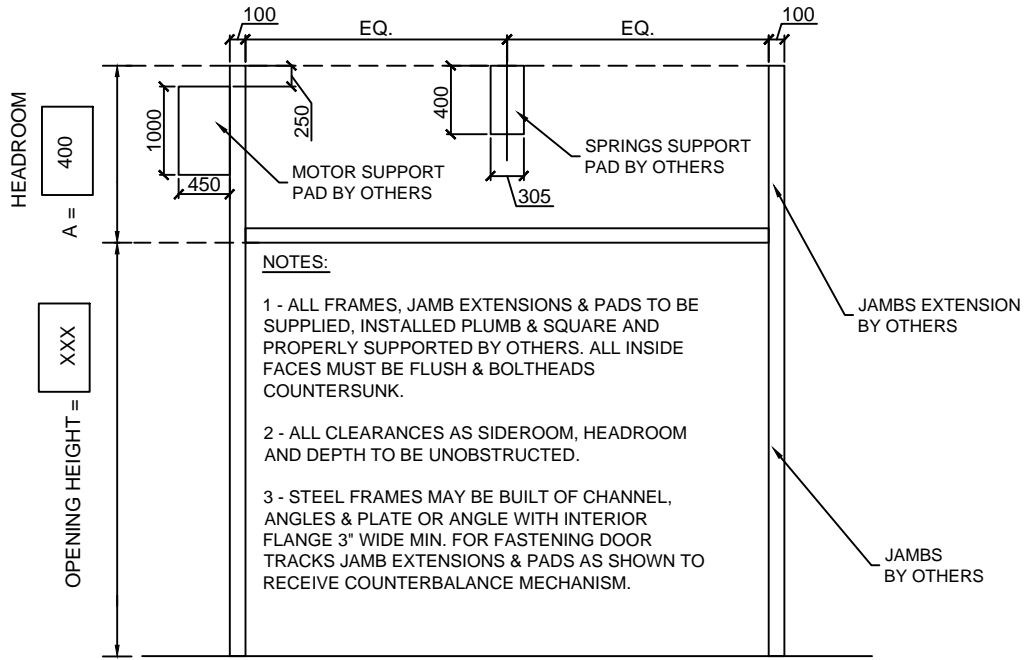
Name:.....
Signature:.....
Date:.....

| MODEL | QTY. | DOOR | | No. of PAN. | No. of SECT. | OPERATION |
|------------------------------|------|---------|---------|-------------|--------------|------------------------------------|
| | | WIDTH | HEIGHT | | | |
| TRADITION MARK II-244A | X | XXXXmm | XXXXmm | X | X | ELECTRIC OPERATOR BY THERMOSTOP |
| | | XX' XX" | XX' XX" | | | |
| | | OPENING | | | | |
| | | XXXXmm | XXXXmm | | | |
| | | XX' XX" | XX' XX" | | | |

THERMOSTOP INC.
3775 BOULEVARD LOSCH, ST-HUBERT, QUÉBEC J3Y 5T7
PROJECT NAME : XXXXXXXXXXXX
DISTRIBUTOR : XXXXXXXXXXXX
CONTRACTOR : XXXXXXXXXXXX
ARCHITECT : XXXXXXXXXXXX

NOTES:
DRAWINGS NOT TO SCALE
ALL DIMENSIONS ARE IN mm

| DATE | DRAWN BY | VERIFIED BY | QUOTE No. | DRAWING No. | REVISION: |
|------------|----------|-------------|-----------|-------------|-----------|
| XX/XX/XXXX | X.X. | L.H. | XXXXXX | XX/XX | XX |



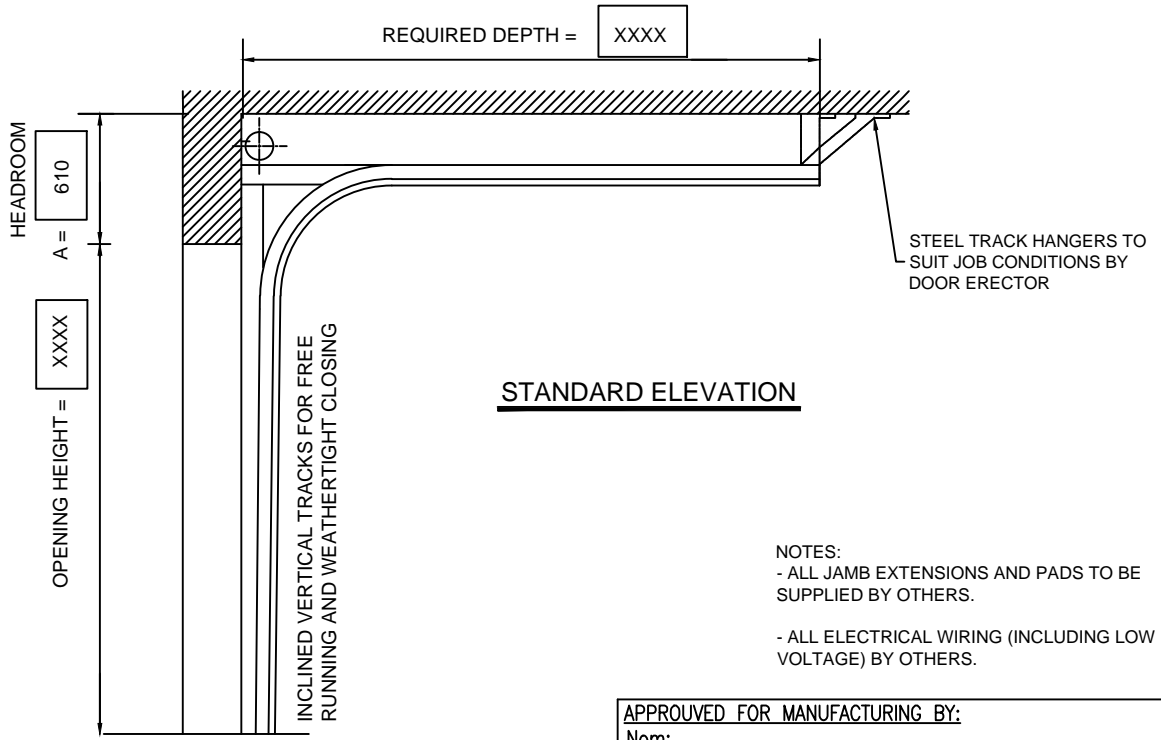
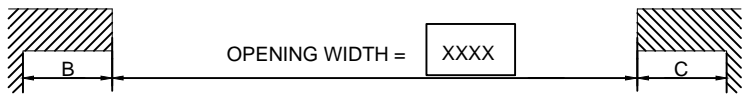
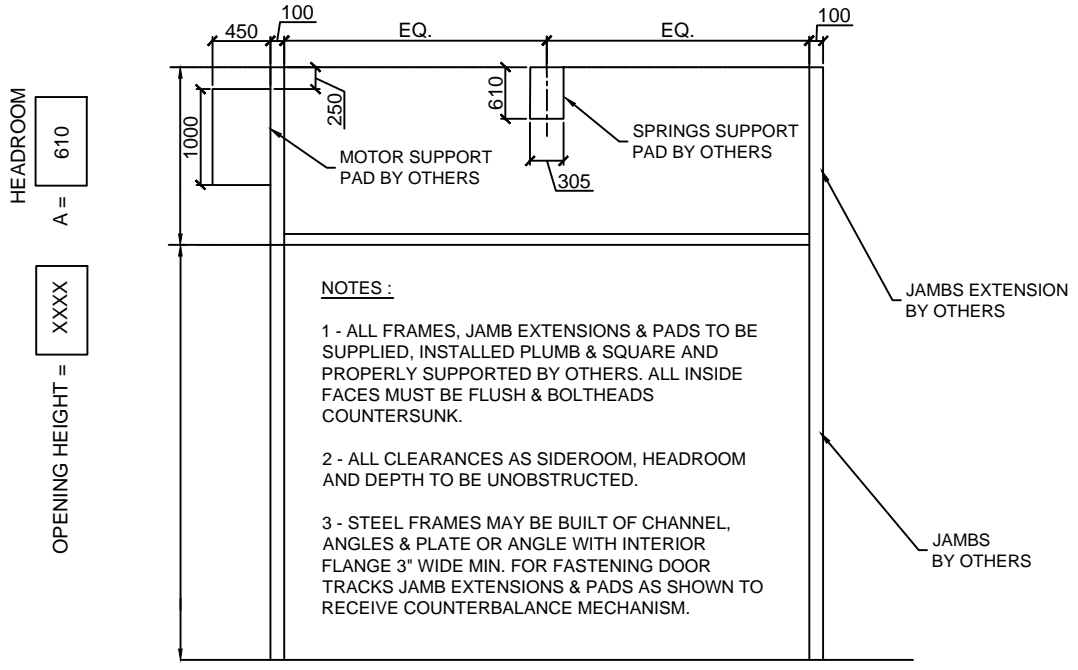
APPROVED FOR MANUFACTURING BY:
 Nom:.....
 Signature:.....
 Date:.....

| MODEL | QTY. | No DOOR | CLEARANCE REQ. | | | DEPTH | SECT. | GLASS |
|------------------------|------|---------|----------------|-------|-------|-------|-------|------------|
| | | | A | B | C | | | |
| TRADITION MARK II-244A | X | | 400mm | 550mm | 100mm | XXmm | X | GLASS TYPE |
| | | | | | | | | |
| | | | | | | | | |

THERMOSTOP INC.
 3775 BOULEVARD LOSCH, ST-HUBERT, QUÉBEC J3Y 5T7
 PROJECT NAME : XXXXXXXXXXXX
 DISTRIBUTOR : XXXXXXXXXXXX
 CONTRACTOR : XXXXXXXXXXXX
 ARCHITECT : XXXXXXXXXXXX

NOTE :
 DRAWINGS NOT TO SCALE
 ALL DIMENSIONS ARE IN mm

| DATE | DRAWN BY | VERIFIED BY | QUOTE No. | DRAWING No. | REVISION: |
|------------|----------|-------------|-----------|-------------|-----------|
| XX/XX/XXXX | X.X. | L.H. | XXXXXXXX | XX/XX | XX |



STANDARD ELEVATION

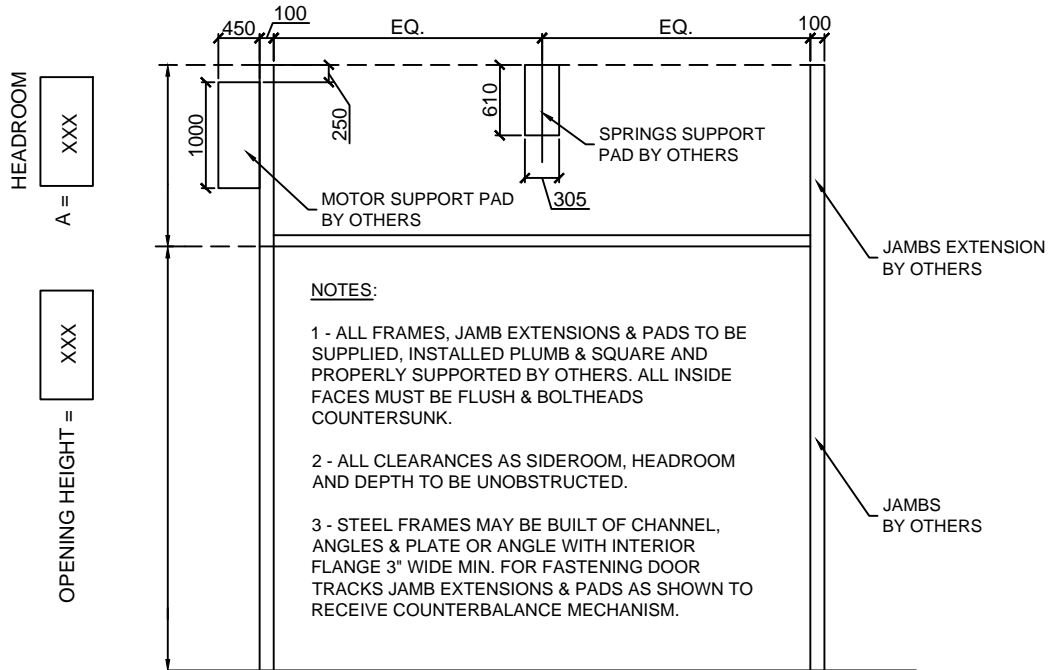
APPROVED FOR MANUFACTURING BY:
 Nom:.....
 Signature:.....
 Date:.....

| MODEL | QTY. | No DOOR | CLEARANCE REQ. | | | DEPTH | SECT. | GLASS |
|------------------------|------|---------|----------------|-------|-------|-------|-------|------------|
| | | | A | B | C | | | |
| TRADITION MARK II-244A | X | | 610mm | 550mm | 100mm | XXmm | X | GLASS TYPE |
| | | | | | | | | |
| | | | | | | | | |

THERMOSTOP INC.
 3775 BOULEVARD LOSCH, ST-HUBERT, QUÉBEC J3Y 5T7
 PROJECT NAME : XXXXXXXXXXXX
 DISTRIBUTOR : XXXXXXXXXXXX
 CONTRACTOR : XXXXXXXXXXXX
 ARCHITECT : XXXXXXXXXXXX

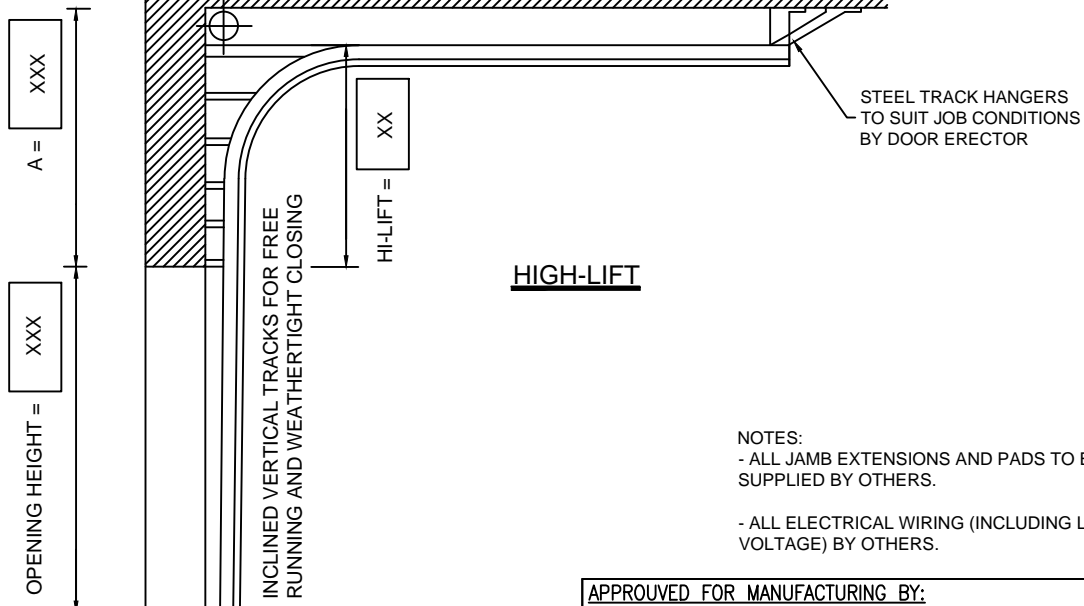
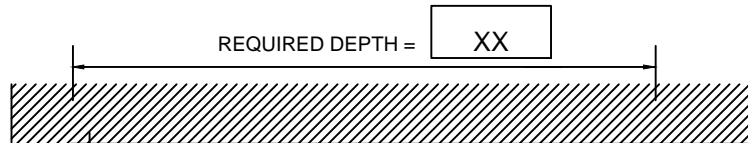
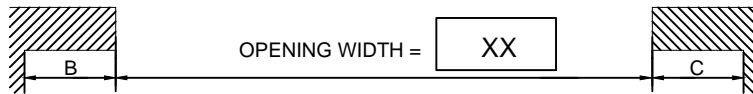
NOTE :
 DRAWINGS NOT TO SCALE
 ALL DIMENSIONS ARE IN mm

| DATE | DRAWN BY | VERIFIED BY | QUOTE No. | DRAWING No. | REVISION: |
|------------|----------|-------------|-----------|-------------|-----------|
| XX/XX/XXXX | X.X. | L.H. | XXXXXX | XX/XX | XX |



NOTES:

- 1 - ALL FRAMES, JAMB EXTENSIONS & PADS TO BE SUPPLIED, INSTALLED PLUMB & SQUARE AND PROPERLY SUPPORTED BY OTHERS. ALL INSIDE FACES MUST BE FLUSH & BOLTHEADS COUNTERSUNK.
- 2 - ALL CLEARANCES AS SIDEROOM, HEADROOM AND DEPTH TO BE UNOBSTRUCTED.
- 3 - STEEL FRAMES MAY BE BUILT OF CHANNEL, ANGLES & PLATE OR ANGLE WITH INTERIOR FLANGE 3" WIDE MIN. FOR FASTENING DOOR TRACKS JAMB EXTENSIONS & PADS AS SHOWN TO RECEIVE COUNTERBALANCE MECHANISM.



- NOTES:**
- ALL JAMB EXTENSIONS AND PADS TO BE SUPPLIED BY OTHERS.
 - ALL ELECTRICAL WIRING (INCLUDING LOW VOLTAGE) BY OTHERS.

APPROVED FOR MANUFACTURING BY:
 Nom:.....
 Signature:.....
 Date:.....

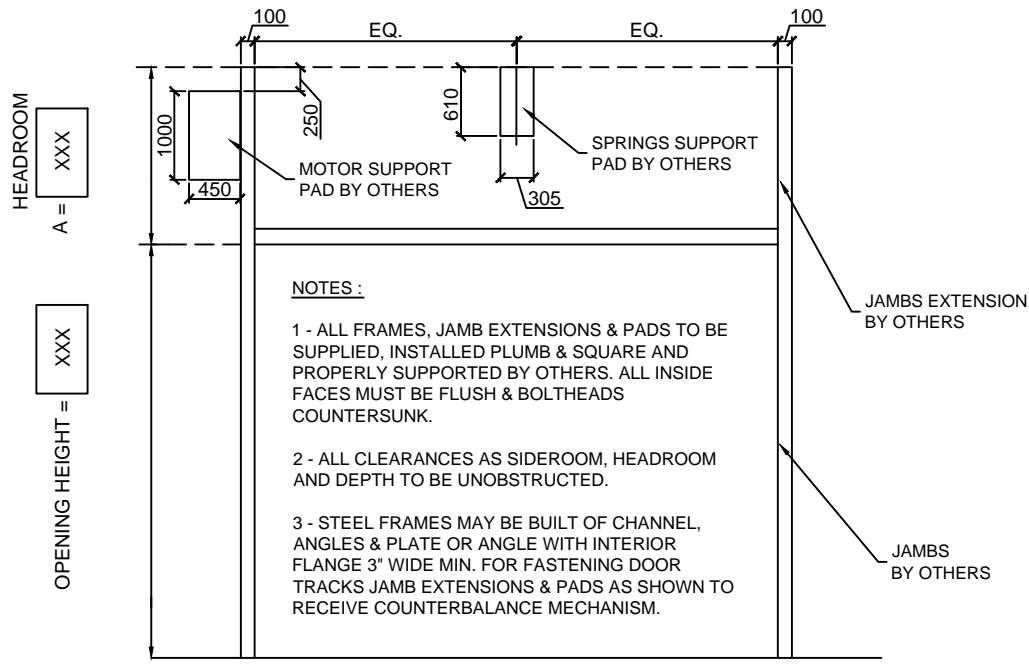
| MODEL | QTY. | No DOOR | CLEARANCE REQ. | | | DEPTH | SECT. | GLASS |
|------------------------|------|---------|----------------|-------|-------|-------|-------|------------|
| | | | A | B | C | | | |
| TRADITION MARK II-244A | X | | XXmm | 550mm | 100mm | XXmm | X | GLASS TYPE |
| | | | | | | | | |
| | | | | | | | | |

NOTE:
 DRAWINGS NOT TO SCALE
 ALL DIMENSIONS ARE IN mm

THERMOSTOP INC.
 3775 BOULEVARD LOSCH, ST-HUBERT, QUÉBEC J3Y 5T7

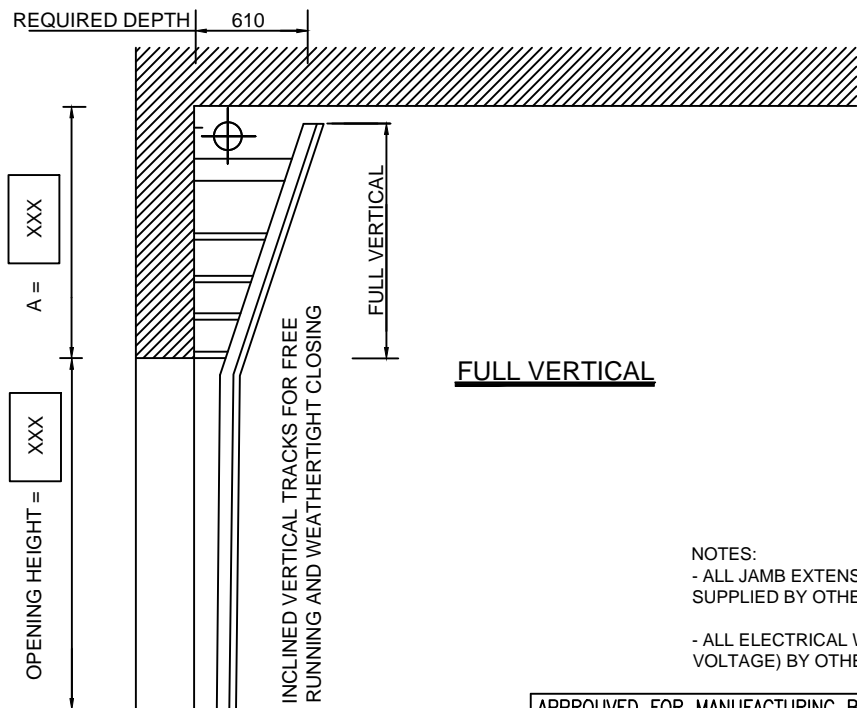
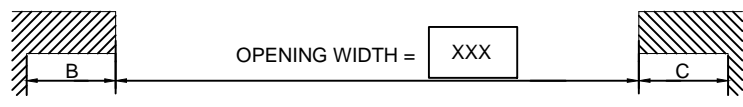
PROJECT NAME : XXXXXXXXXXXX
 DISTRIBUTOR : XXXXXXXXXXXX
 CONTRACTOR : XXXXXXXXXXXX
 ARCHITECT : XXXXXXXXXXXX

| | | | | | |
|--------------------|------------------|---------------------|----------------------|----------------------|-----------------|
| DATE XX/XX/XXXX | DRAWN BY X.X. | VERIFIED BY L.H. | QUOTE No. XXXXXXX | DRAWING No. XX/XX | REVISION: XX |
|--------------------|------------------|---------------------|----------------------|----------------------|-----------------|



NOTES :

- 1 - ALL FRAMES, JAMB EXTENSIONS & PADS TO BE SUPPLIED, INSTALLED PLUMB & SQUARE AND PROPERLY SUPPORTED BY OTHERS. ALL INSIDE FACES MUST BE FLUSH & BOLTHEADS COUNTERSUNK.
- 2 - ALL CLEARANCES AS SIDEROOM, HEADROOM AND DEPTH TO BE UNOBSTRUCTED.
- 3 - STEEL FRAMES MAY BE BUILT OF CHANNEL, ANGLES & PLATE OR ANGLE WITH INTERIOR FLANGE 3" WIDE MIN. FOR FASTENING DOOR TRACKS JAMB EXTENSIONS & PADS AS SHOWN TO RECEIVE COUNTERBALANCE MECHANISM.



NOTES:

- ALL JAMB EXTENSIONS AND PADS TO BE SUPPLIED BY OTHERS.
- ALL ELECTRICAL WIRING (INCLUDING LOW VOLTAGE) BY OTHERS.

APPROVED FOR MANUFACTURING BY:
 Nom:.....
 Signature:.....
 Date:.....

| MODEL | QTY. | No DOOR | CLEARANCE REQ. | | | DEPTH | SECT. | GLASS |
|------------------------|------|---------|----------------|-------|-------|-------|-------|------------|
| | | | A | B | C | | | |
| TRADITION MARK II-244A | X | | XXmm | 550mm | 100mm | 610mm | X | GLASS TYPE |
| | | | | | | | | |
| | | | | | | | | |

THERMOSTOP INC.
 3775 BOULEVARD LOSCH, ST-HUBERT, QUÉBEC J3Y 5T7
 PROJECT NAME : XXXXXXXXXXXX
 DISTRIBUTOR : XXXXXXXXXXXX
 CONTRACTOR : XXXXXXXXXXXX
 ARCHITECT : XXXXXXXXXXXX

NOTE :
 DRAWINGS NOT TO SCALE
 ALL DIMENSIONS ARE IN mm

| DATE | DRAWN BY | VERIFIED BY | QUOTE No. | DRAWING No. | REVISION |
|------------|----------|-------------|-----------|-------------|----------|
| xx/xx/xxxx | X.X. | L.H. | XXXXXXX | xx/xx | XX |