



The rust resistant industrial door!



The Thermostop™ Alucent is an airtight and robust industrial door. With a 2" (R-18), 3" (R-24) or 4" (R-32) thick CFC-free foam core, the Alucent door is the best insulated door of the industry. Corrosion resistant thanks to its polyester coated 24ga. aluminum skins, the Alucent door is ideal for applications such as fire station, service station, car wash, car dealership, food/flower warehouse, hospital, saline environment, salt municipal warehouse, etc.

Rust resistant panels:

24ga. aluminum skins coated with industrial polyester coating.

Corrosion resistant hardware:

All hardware accessories including shaft and springs are galvanized for rust protection.

Best insulation performance:

2" (R-18), 3" (R-24) or 4" (R-32) thick CFC-free polyurethane foam core.

Airtight design:

Deep tongue-and-groove joint with integral bubble seal. Authentic thermal break. Triple lip perimeter weather seal. Double bottom U rubber seal.

Robust construction and quality materials:

High quality galvanized steel or aluminum skins. Steel end caps. Heavy-duty hardware. Industrial motors and accessories.

Wind load design criteria:

Doors to withstand a wind load of 1 kPa (velocity of 145 km/hour) with a maximum horizontal deflection of 1/120 of opening width.

Performance tests:

- **ASTM E-283**
 (Air Leakage):
 0.645 L/s-m² at 75 Pa (0.127 cfm/ft² at 25 miles/hour)
- **ASTM E-547**
 (Water Penetration): Absolutely no leak

Reference product:

Thermostop™ Alucent doors, model Mark II-244, Mark III-244, Mark IV-244, as manufactured by Thermostop Inc., www.thermostop.com

Manufacturing process:

The inner core consists of rigid polyurethane, foamed-in-place under high pressure between two metal skins.

Joint and seal:

High quality aluminum skins roll formed into an exclusive tongue-and-groove joint with a true thermal break and a double bubble-shaped weather seal (single seal for the Mark II).



Metal skins, thickness and insulation value:

24ga. aluminum skins. 2" thick (R-18), 3" thick (R-24) or 4" thick (R-32).

Finish:

stucco finish.

Standard



White



Grey RAL-9006

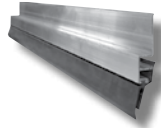
Optional



Painted color to be selected by consulting the RAL color chart.

Perimeter weather seal:

3-lip, flexible PVC weather seal, retained in an extra robust extruded aluminum retainer.



Bottom weather seal:

U-shaped, flexible PVC double weather seal, retained in a heavy duty extruded aluminum retainer (one bottom seal for the Mark II model).



End caps:

Sections are equipped with 16ga. (1.42mm) thick galvanized steel end caps.



Glazing:

Type A:

Full view extruded aluminum panel. Clear anodized finish (for the Mark II only).



Type B:

Black square frame. Double acrylic or 1/8" - 1/8" sealed glass. Standard 24" x 12".



Type C:

Black round corner frame. Double acrylic glass. Standard 24" x 12".



Type E:

White square frame windows. Standard 24" x 12".



Hardware and electric operators:

Recommended models (for 10 000 cycles springs):

- **Up to 16'0" (W.) x 16'0" (H.):**
 Hardware model 80-T with electric motor XTRA-H
- **More than 16'0" (W.) x 16'0" (H.):**
 Hardware model 80-THD with electric motor XTRA-HHD

Note: For more information, please consult the **Hardware - Thermostop Industrial Doors and Operators - Thermostop Industrial Doors brochures.**

Metal skins:

24ga. Aluminum



THERMOSTOP

Tradition of quality

3775 Losch Blvd.
 Longueuil (Quebec)
 Canada
 J3Y 5T7

Phone: 450.678.8666
Toll free: 866.678.0123
Fax: 450.678.7765
thermostop.com

Warranty

Thermostop doors and hardware carry a warranty of one (1) year against any defects or faulty workmanship. The door panels carry a ten (10) year limited warranty against perforation due to rusting, and a five (5) year limited warranty on delamination, under normal operational conditions.

THERMOSTOP