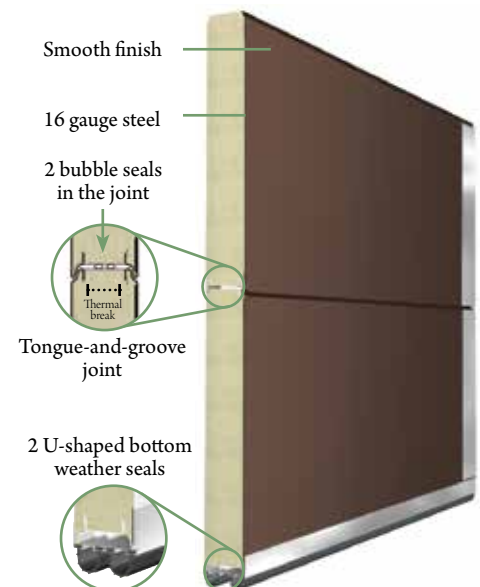


The residential security door!



Armored with 16 gauge steel skins or 20 gauge steel skins, the Thermostop™ Bentley security door is designed for strength, robustness and durability and will safeguard your home against malicious intrusion. With its attractive modern look, the Thermostop™ Bentley security door will enrich the contemporary appearance of your home.

- ❶ Intrusion resistant
 16 gauge steel skins or 20 gauge steel skins, offering an impregnable shield against intrusion
- ❷ Industry highest insulation performance.
 Three door thickness options: 2" thick (R-18), 3" thick (R-24) or 4" thick (R-32)
- ❸ Door is extremely airtight with tongue-and-groove joint with integral bubble seal (double seals for 3" thick & 4" thick), three-lip perimeter weather seal, U-rubber bottom seal (double seals for 3" thick & 4" thick)
- ❹ Smooth finish door skins, providing a distinct and appealing look
- ❺ High density foamed-in-place polyurethane core



Technical specifications

Section 08 36 13

Wind load design criteria:

Doors to withstand a wind load of 21psf (velocity of 90.5 miles/hour) with a maximum horizontal deflection of 1/120 of opening width.

Performance tests:

- **ASTM E-283**
 (Air Leakage): Less than 0.130 cfm/ft² at 25 miles/hour
- **ASTM E-547**
 (Water Penetration): Absolutely no leak

Reference product:

Thermostop™ Bentley doors, model Mark II-200, Mark III-200, Mark IV-200, Mark II-166, Mark III-166 or Mark IV-166, as manufactured by Thermostop Inc., www.thermostop.com

Manufacturing process:

The inner core consists of rigid polyurethane, foamed in place under high pressure between two metal skins.

Joint and seal:

High quality galvanized steel skins roll formed into an exclusive tongue-and-groove joint with a true thermal break and a double bubble-shaped weather seal (single seal for the Mark II models).



Metal skins, thickness & insulation value:

Options available:

- 20ga. steel: Thermostop™ Bentley, model Mark II-200 (2", R-18), Mark III-200 (3", R-24) or Mark IV-200 (4", R-32)
- 16ga. steel: Thermostop™ Bentley, model Mark II-166 (2", R-18), Mark III-166 (3", R-24) or Mark IV-166 (4", R-32)

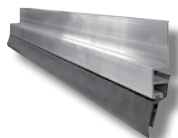
Finish:

- 20ga. steel: White. Optional shop painted color. Smooth finish, with ribs.
- 16ga. steel: Skins to be shop painted. Color to be selected from the RAL color chart. Smooth finish.



Perimeter weather seal:

3-lip, flexible PVC weather seal, retained in an extra robust extruded aluminum retainer.



Bottom weather seal:

U-shaped, flexible PVC double weather seal, retained in a heavy duty extruded aluminum retainer (one bottom seal for the Mark II models).



End caps:

Sections are equipped with 16ga. (1.42mm) thick galvanized steel end caps.



Glazing:



Type A (for the Mark II models only): Full view extruded aluminum panel. Standard anodized finish.



Type B **Type C** **Type E**
 Standard 24" x 12".

Hardware and electric operators:

Recommended models (for 10 000 cycles springs):

- Up to 12'0" (W.) x 12'0" (H.): Hardware model 80-T with electric motor XTRA-H
- Up to 16'0" (W.) x 16'0" (H.): Hardware model 80-THD with electric motor XTRA-HHD

More than 16'0" (W.) x 16'0" (H.): Consult with Thermostop Inc.

Note: For more information, please consult the **Hardware - Thermostop Industrial Doors and Operators - Thermostop Industrial Doors brochures.**

Metal skins: 2 options available

20ga. Steel



Mark II-200 2" (50mm) Mark III-200 3" (75mm) Mark IV-200 4" (100mm)

- White, smooth finish, with ribs
- Optional shop painted color

16ga. Steel



Mark II-166 2" (50mm) Mark III-166 3" (75mm) Mark IV-166 4" (100mm)

- Smooth finish
- Shop painted color



Tradition of quality

3775 Losch Blvd.
 Longueuil (Quebec)
 Canada
 J3Y 5T7

Phone: 450.678.8666
Toll free: 866.678.0123
Fax: 450.678.7765

thermostop.com

Warranty

Thermostop doors and hardware carry a warranty of one (1) year against any defects or faulty workmanship. The door panels carry a ten (10) year limited warranty against perforation due to rusting, and a five (5) year limited warranty on delamination, under normal operational conditions.

