

## *The best insulated industrial door!*



Energex Mark IV-200 - Municipal Work Yard, Ottawa, Ontario

The Thermostop™ Energex is simply the best insulated industrial door. With a 3" (R-24) or 4" (R-32) thick CFC-free polyurethane foam core, the Energex door is by far the best insulated door of the industry. Extremely airtight and robust, the Energex door is ideal for applications such as government building, LEED building, municipal warehouse, hospital, arctic airport and government building, arctic arena and school, etc.

**Best insulation performance:**

3" (R-24) or 4" (R-32) thick high density CFC-free polyurethane foam core.

**Robust construction:**

High quality galvanized steel skins with 25 microns polyester top coat. Galvanized steel end caps.

**Airtight design:**

Deep tongue-and-groove joint with integral bubble seal. Authentic thermal break. Triple lip perimeter weather seal. Double bottom U rubber seal.

**Heavy duty hardware and motor:**

3" galvanized track system with torsion spring counterbalancing system. Industrial motors and accessories.

**Wind load design criteria:**

Doors to withstand a wind load of 1 kPa (velocity of 145 km/hour) with a maximum horizontal deflection of 1/120 of opening width.

**Performance tests:**

■ **ASTM E-283**

(Air Leakage): 0.645 L/s-m<sup>2</sup> at 75 Pa (0.127 cfm/ft<sup>2</sup> at 25 miles/hour)

■ **ASTM E-547**

(Water Penetration): Absolutely no leak

**Reference product:**

Thermostop™ Energex doors, model Mark III-266 (26ga. steel), Mark IV-266 (26ga. steel), Mark III (20ga. steel), Mark IV-200 (20ga. steel), as manufactured by Thermostop Inc., www.thermostop.com

**Manufacturing process:**

The inner core consists of rigid polyurethane, foamed-in-place under high pressure between two metal skins.

**Joint and seal:**

High quality metal skins roll formed into an exclusive tongue-and-groove joint with a true thermal break and a double bubble-shaped weather seal.



**Metal skins, thickness & insulation value:**

■ **26ga. steel:**

Energex Mark III-266 (3" thick, R-24)  
 Energex Mark IV-266 (4" thick, R-32)

■ **20ga. steel:**

Energex Mark III-200 (3" thick, R-24)  
 Energex Mark IV-200 (4" thick, R-32)

**Finish:**

stucco finish (26ga. steel)

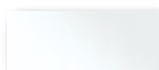
or

smooth finish (20ga. steel)

**Standard**



White (stucco)



White (smooth)

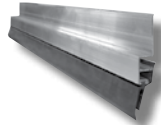
**Optional**



Painted color to be selected from the RAL color chart.

**Perimeter weather seal:**

3-lip, flexible PVC weather seal, retained in an extra robust extruded aluminium retainer.



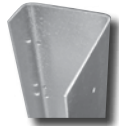
**Bottom weather seal:**

U-shaped, flexible PVC double weather seal, retained in a heavy-duty extruded aluminium retainer.



**End caps:**

Sections are equipped with 16ga. (1.42mm) thick galvanized steel end caps.



**Glazing:**

Standard size 24" x 12".

**Type B:**

Black square frame. Double acrylic or 1/8" - 1/8" sealed glass.



**Type C:**

Black round corner frame. Double acrylic glass.



**Type E:**

White square frame windows. 1/8" - 1/8" sealed glass.



**Hardware and electric operators:**

Recommended model

(for 10 000 cycles springs):

Hardware model 80-THD

with electric motor XTRA-HHD

**Note:** For more information, please consult *Hardware - Thermostop Industrial Doors and Operators - Thermostop Industrial Doors brochures.*



Mark III 3" (75mm)

Mark IV 4" (100mm)

**Metal skins options:**

Steel	Finish
26ga.	white, stucco
20ga.	white, smooth



Energex Mark IV-200 - Salluit Airport, Nunavik

**THERMOSTOP**  
 Tradition of quality

3775 Losch Blvd.  
 Longueuil (Quebec)  
 Canada  
 J3Y 5T7

**Phone: 450.678.8666**  
 Toll free: 866.678.0123  
 Fax: 450.678.7765  
**thermostop.com**

**Warranty**

Thermostop doors and hardware carry a warranty of one (1) year against any defects or faulty workmanship. The door panels carry a ten (10) year limited warranty against perforation due to rusting, and a five (5) year limited warranty on delamination, under normal operational conditions.

**THERMOSTOP**