



## The most secure door in the industry!

The Thermostop™ Sentinel doors are your high security sectional doors which offer both a strong deterrent to intrusion and the highest insulation performance. Since 1984, architects, building design consultants and end users have recognized the extraordinary dual quality of the Thermostop™ Sentinel doors and have used them for applications such as:

- Detention center
- Diamond and gold mine
- Government building
- Military installation
- Pharmaceutical plant and warehouse
- Police station
- Research laboratorie



Hydro-Québec Building Model Mark II-166 (2" thick - 16ga. steel)

### Sentinel®/ Thermostop™

Mark II, Mark III, Mark IV Series

08 34 19 Industrial Doors

#### Insurmountable shield against intrusion:

High quality 20 gauge or 16 gauge steel for both exterior and interior skins.

#### Best insulation performance:

2" (R-18), 3" (R-24) or 4" (R-32) door thickness with an insulated polyurethane foam core.

#### Designed for energy savings:

A deep tongue-and-groove joint with an integral bubble weather seal ensures a superior air tightness. An authentic thermal break eliminates heat loss by preventing conductivity between external and internal skins.

#### Built to last:

Proven experience and expertise achieve a perfect adherence of polyurethane foam to metal skins, ensuring panels strength, rigidity and preservation of the insulation value over time.

#### Superior quality materials:

The high quality of the pre-painted galvanized steel ensures durability and resistance to corrosion. Triple-lip perimeter weather seal retained in a heavy duty aluminum retainer. Industrial aluminum bottom retainer with U-shaped bottom weather seal.



Government of Canada Building  
Model Mark IV-200 (4" thick - 20ga. steel)

**Technical specifications**

08 34 19 Industrial Doors

**Wind load design criteria:**

Doors to withstand a wind load of 1 kPa (velocity of 145 km/hour) with a maximum horizontal deflection of 1/120 of opening width.

**Performance tests:**

— **ASTM E-283**

(Air Leakage): 0.645 L/s-m<sup>2</sup> at 75 Pa (0.127 cfm/ft<sup>2</sup> at 25 miles/hour)

— **ASTM E-547**

(Water Penetration): Absolutely no leak

**Reference product:**

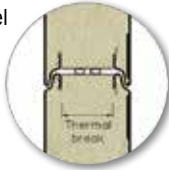
Thermostop™ Sentinel doors, model Mark II-200, Mark III-200, Mark IV-200, Mark II-166, Mark III-166 or Mark IV-166, as manufactured by Thermostop Inc., www.thermostop.com

**Manufacturing process:**

The inner core consists of rigid polyurethane, foamed in place under high pressure between two metal skins.

**Joint and seal:**

High quality galvanized steel skins roll formed into an exclusive tongue-and-groove joint with a true thermal break and a double bubble-shaped weather seal (single seal for the Mark II models).



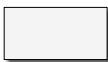
**Metal skins, thickness and insulation value:**

Options available:

- 20ga. steel: Thermostop™ Sentinel, model Mark II-200 (2", R-18), Mark III-200 (3", R-24) or Mark IV-200 (4", R-32)
- 16ga. steel: Thermostop™ Sentinel, model Mark II-166 (2", R-18), Mark III-166 (3", R-24) or Mark IV-166 (4", R-32)

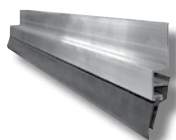
**Finish:**

- 20ga. steel: White. Optional shop painted color. Smooth finish, with ribs.
- 16ga. steel: Skins to be shop painted. Color to be selected from the RAL color chart. Smooth finish.



**Perimeter weather seal:**

3-lip, flexible PVC weather seal, retained in an extra robust extruded aluminum retainer.



**Bottom weather seal:**

U-shaped, flexible PVC double weather seal, retained in a heavy duty extruded aluminum retainer (one bottom seal for the Mark II models).



**End caps:**

Sections are equipped with 16ga. (1.42mm) thick galvanized steel end caps.



**Glazing:**



**Type A (for the Mark II models only):**

Full view extruded aluminum panel. Standard anodized finish.



**Type B**

**Type C**

**Type E**

Standard 24" x 12".

**Hardware and electric operators:**

Recommended models (for 10 000 cycles springs):

- Up to 12'0" (W.) x 12'0" (H.): Hardware model 80-T with electric motor XTRA-H
- Up to 16'0" (W.) x 16'0" (H.): Hardware model 80-THD with electric motor XTRA-HHD

More than 16'0" (W.) x 16'0" (H.): Consult with Thermostop Inc.

**Note:** For more information, please consult **Hardware - Thermostop Industrial Doors and Operators - Thermostop Industrial Doors brochures.**

**Metal skins: 2 options available**

**20ga. Steel**



Mark II-200  
2" (50mm)

Mark III-200  
3" (75mm)

Mark IV-200  
4" (100mm)

- White, smooth finish, with ribs
- Optional shop painted color

**16ga. Steel**



Mark II-166  
2" (50mm)

Mark III-166  
3" (75mm)

Mark IV-166  
4" (100mm)

- Smooth finish
- Shop painted color

**THERMOSTOP**

Tradition of quality

3775 Losch Blvd.  
Longueuil (Quebec)  
Canada  
J3Y 5T7

**Phone: 450.678.8666**  
**Toll free: 866.678.0123**  
**Fax: 450.678.7765**

**thermostop.com**

**Warranty**

Thermostop doors and hardware carry a warranty of one (1) year against any defects or faulty workmanship. The door panels carry a ten (10) year limited warranty against perforation due to rusting, and a five (5) year limited warranty on delamination, under normal operational conditions.

THERMOSTOP