



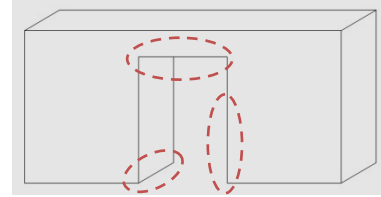
INSTALLATION INSTRUCTIONS IMPACT TRAFFIC HD DOORS



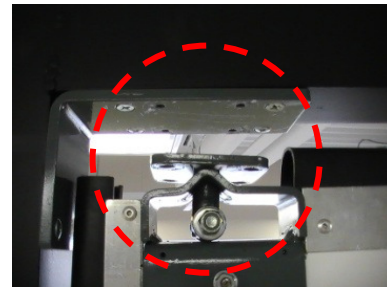


1. Check the rough opening

- 1.1. Check door frame (supplied by other) and floor for plumb and squareness.



2. Remove door top pivot



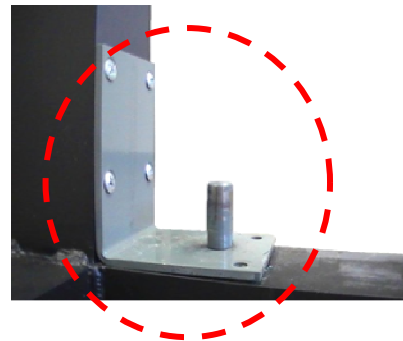
3. Install hinges brackets

- 3.1. Install top hinge bracket on the top corner of the door frame.



- 3.2. Install lower hinge bracket on the lower corner of the door frame.

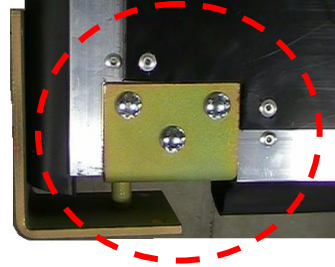
- 3.3. Ensure that the lower bracket is aligned with top bracket.





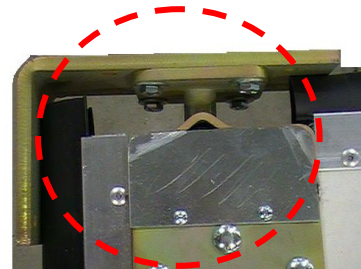
4. Install door leaf

4.1. Insert the door leaf (panel) into the lower pivot.



4.2. Re-install door top pivot.

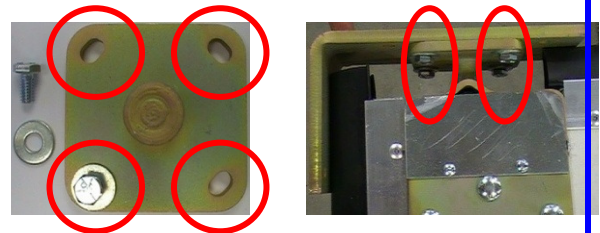
4.3. Attach the top pivot to the top bracket.



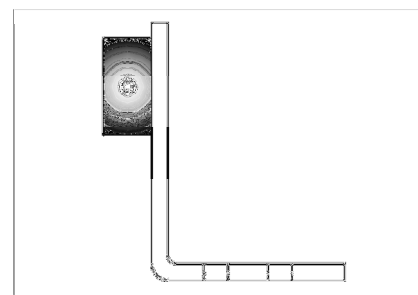
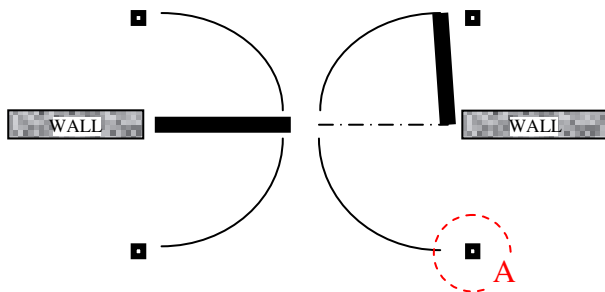
5. Make the necessary adjustments to ensure the adequate operation of the door

5.1. To adjust door leaf for tight closing, loosen bolts and rotate pivot.

5.2. Retighten bolts.



6. Install door stopper (2 per leaf) at 100-110 degrees on open position.



DETAIL A
Door stopper